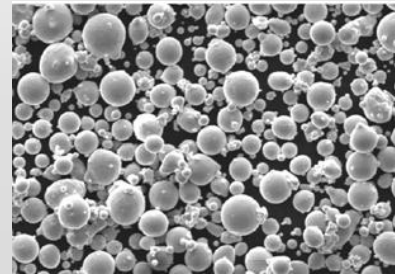


Product Evaluation Systems, Inc. (PES)
637 Donohoe Road, Latrobe, PA 15650 * (724) 834-8848

- **Additive Manufacturing (AM) Characterization**
 - How are your 3D manufacturing techniques affecting your properties?
 - Chemical, Metallographic, Mechanical, & NDE
 - Starting powder stock characterization
 - Analysis of material structure, quality & properties
 - As-deposited material
 - Final heat treated product
 - Variety of process types and product end-uses
 - Various deposition processes
 - Single alloy or multi-alloy characterization
 - OEM or repair parts
 - Variety of material systems
 - Stainless Steels, Nickel Alloys, Titanium Alloys, Aluminum Alloys, Alloyed Steels, Copper Alloys, Carbide Materials

- **One facility can meet a variety of customer needs...**
 - Daily Quality Verification Testing
 - R&D Test Programs
 - AM/Weld Operator & Procedure Qualification Testing
 - Failure Analysis

- **Benefits of a Strategic Partnership**
 - Quality & Repeatability
 - Quick Turnaround
 - Access to Program Personnel & Interim Data
 - Better Resource Management
 - Program Management of Test Program
 - Minimal Burden on Purchasing & Document Control
 - Result → Cost savings for your company!



Rapid Response. Dependable Delivery.

▪ Mechanical Testing ▪ Metallurgical Analysis ▪ Chemical Analysis